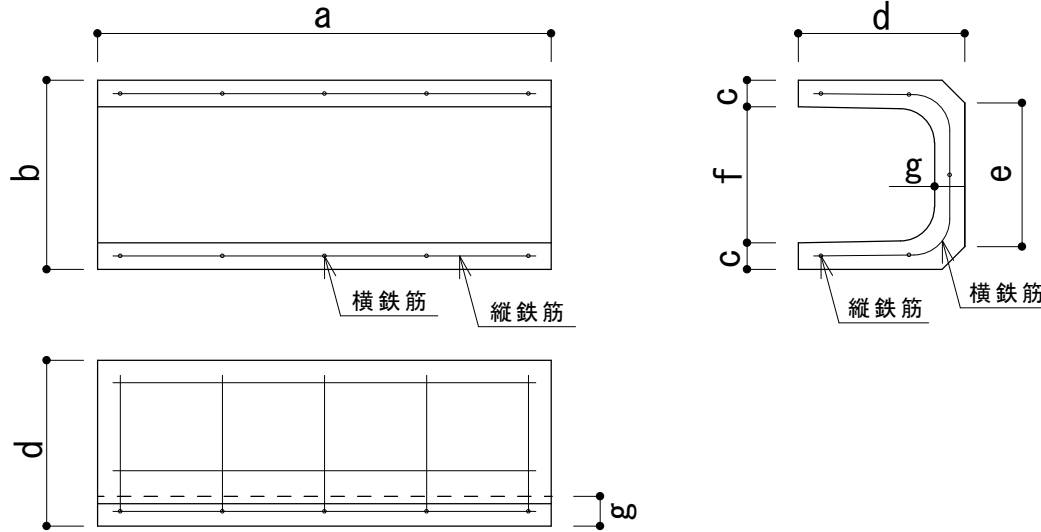
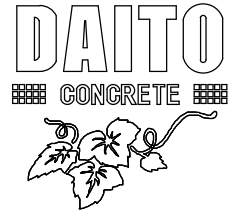
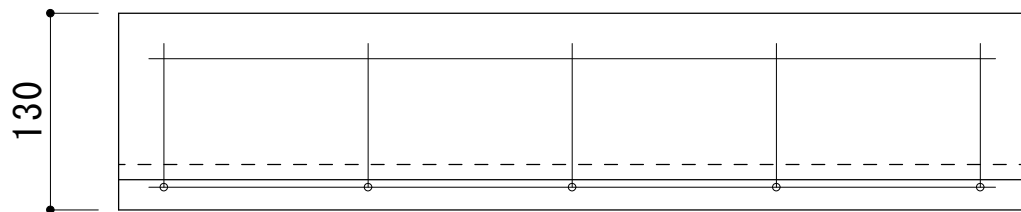
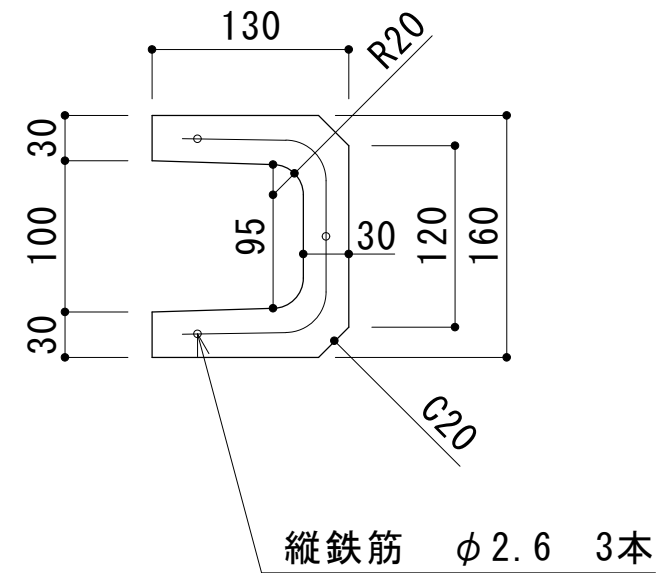
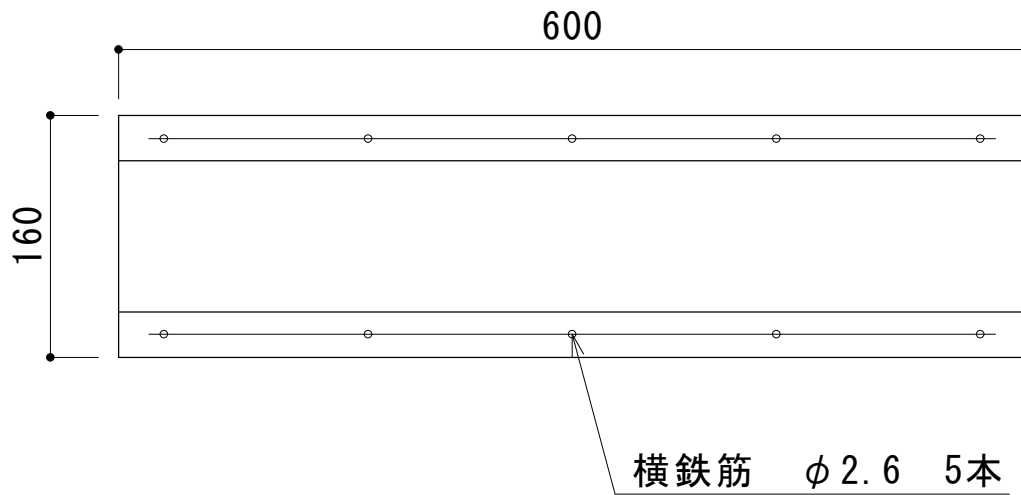
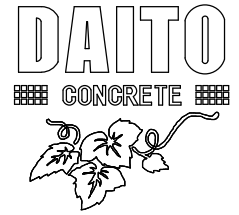


U 字 溝



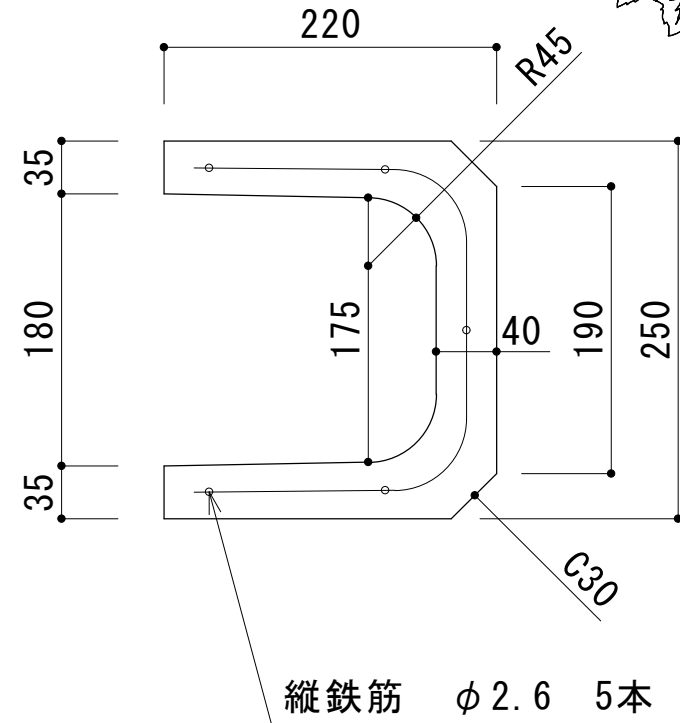
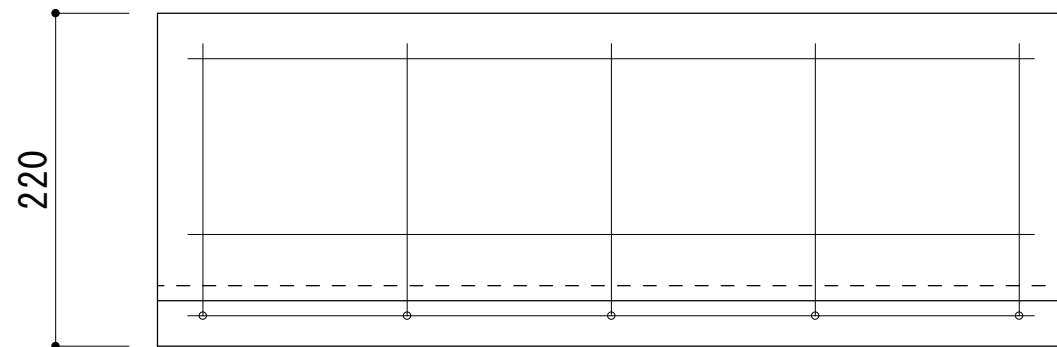
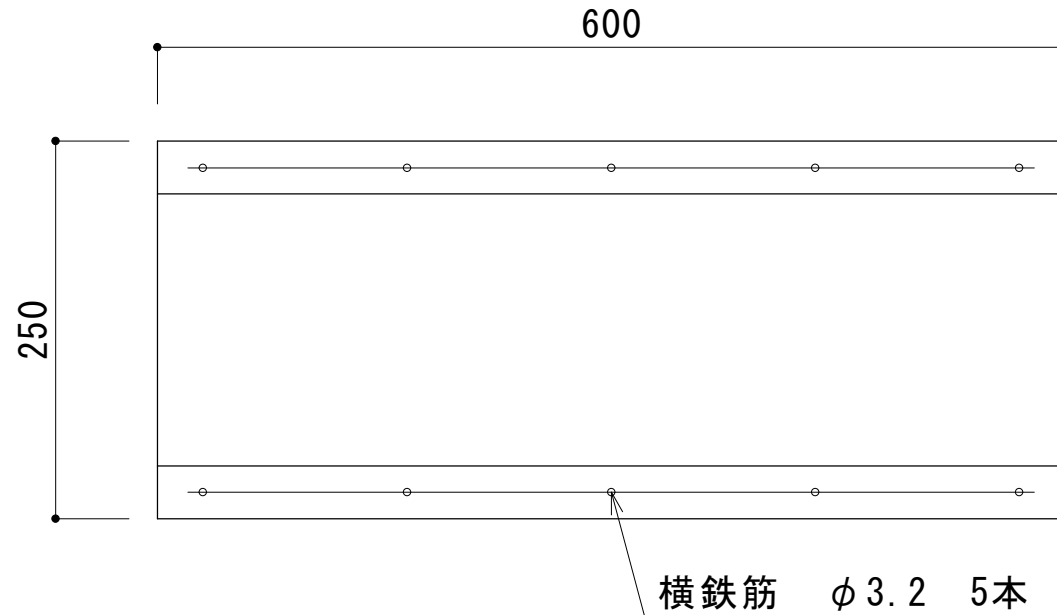
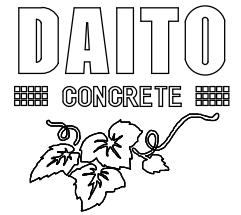
呼び名	重量	寸法 (mm)							鉄筋			
		a	b	c	d	e	f	g	縦鉄筋		横鉄筋	
									径	本数	径	本数
150-U	24kg	600	210	30	185	160	150	35	2.6	5	2.6	5
180-U	32kg	600	250	35	220	190	180	40	2.6	5	3.2	5
240-U	56kg	600	330	45	290	240	240	50	3.2	7	3.2	5
300B-U	77kg	600	400	50	360	300	300	60	3.2	9	4.0	5
360B-U	100kg	600	460	50	425	360	360	65	4.0	11	4.0	8
450-U	139kg	600	560	55	520	430	450	70	4.0	13	5.0	8
600-U	196kg	600	740	70	680	600	600	80	6.0	15	6.0	8

100 U字溝



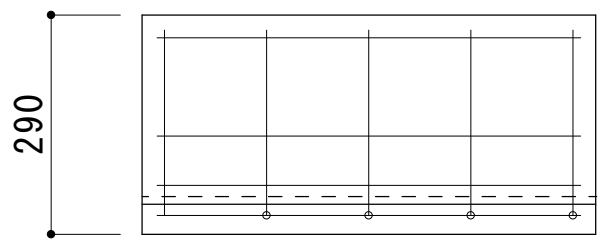
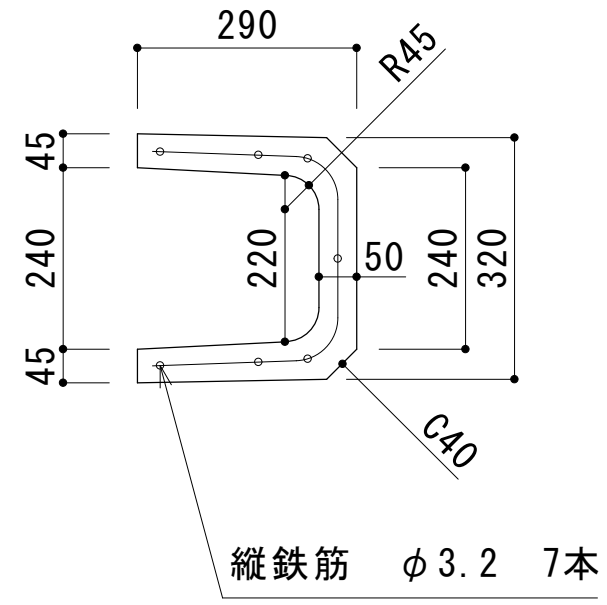
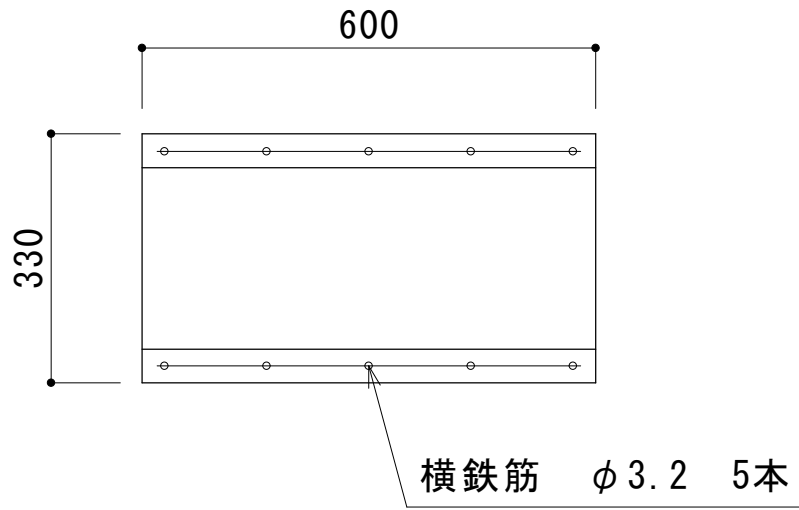
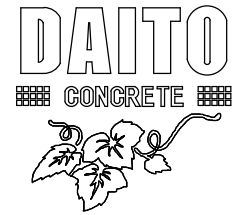
品名	100 U字溝
寸法 (mm)	160 × 600 × 130
重量	15kg

180 U字溝



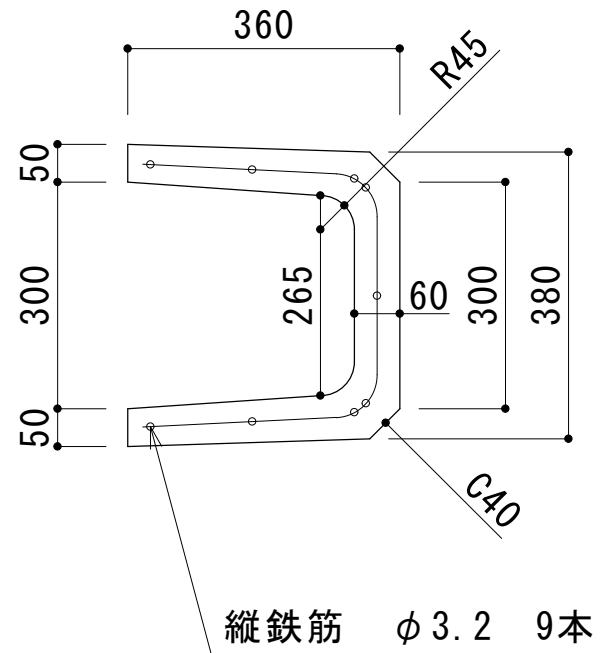
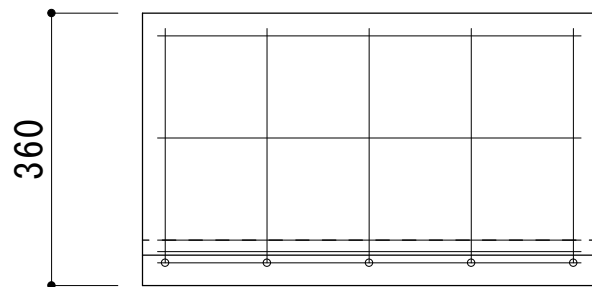
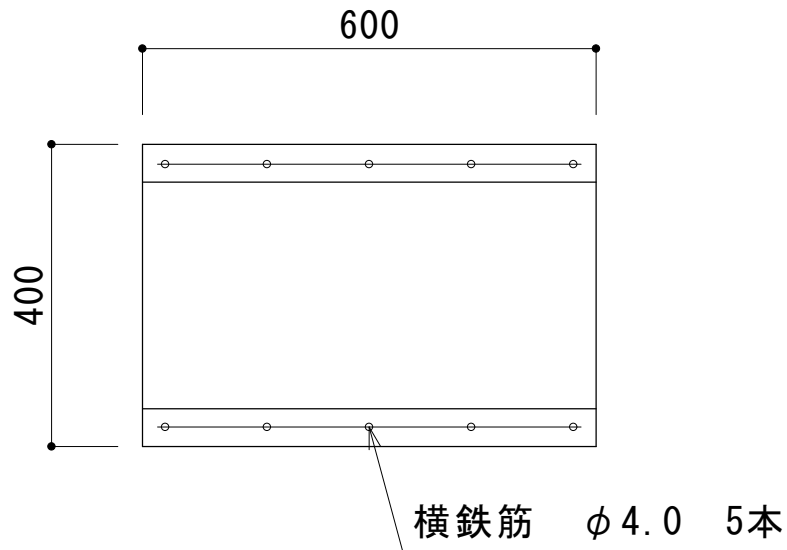
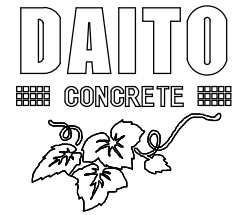
品名	180 U字溝
寸法 (mm)	250 × 600 × 220
重量	32kg

240 U字溝



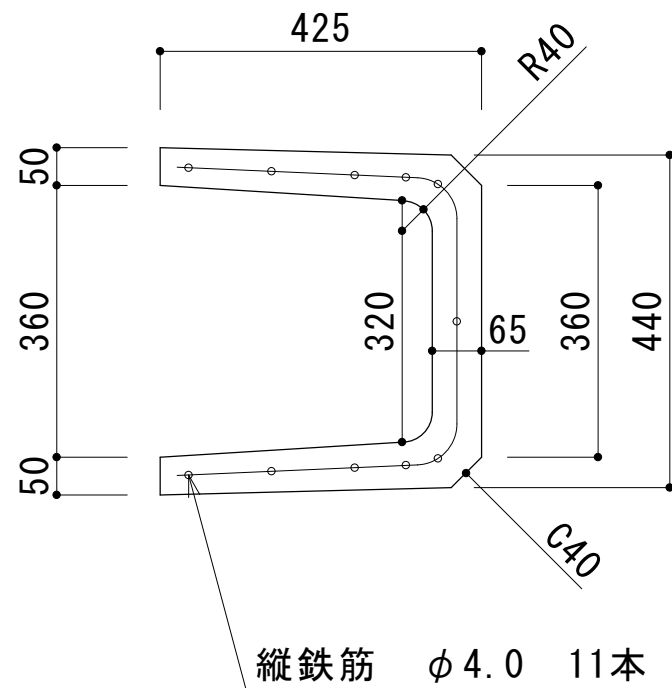
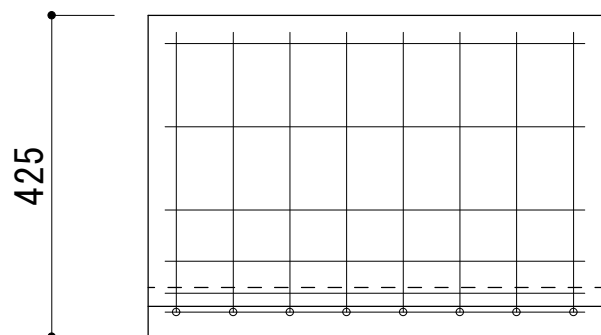
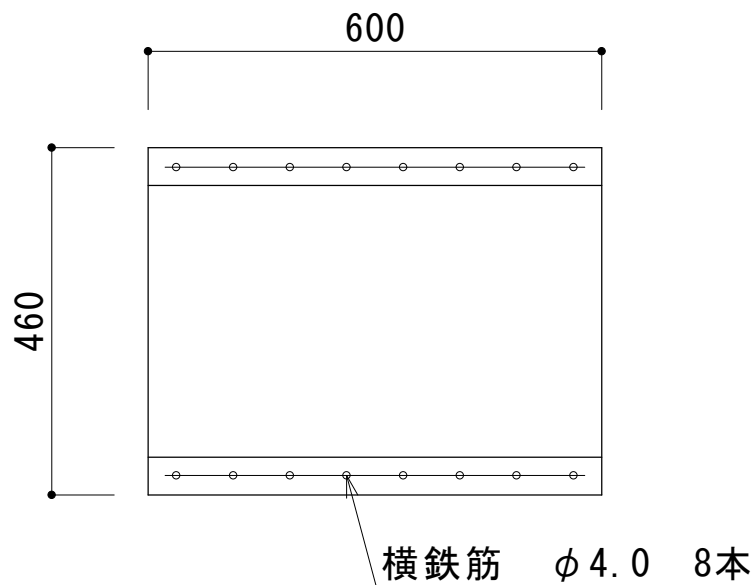
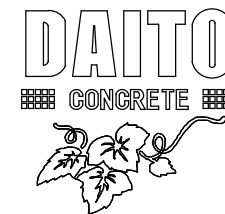
品名	240 U字溝
寸法 (mm)	330 × 600 × 290
重量	56kg

300B U字溝



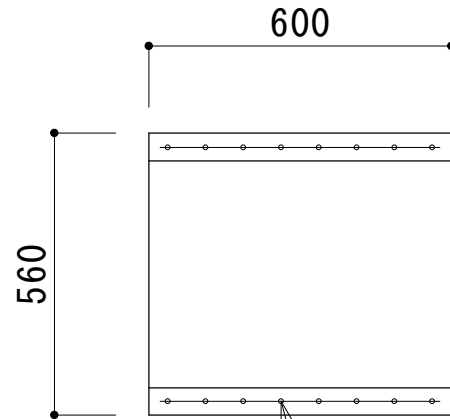
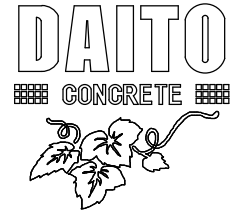
品名	300B U字溝
寸法 (mm)	400 × 600 × 360
重量	77kg

360B U字溝

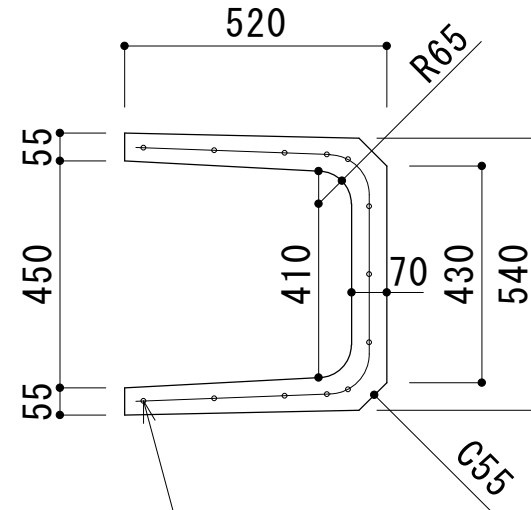
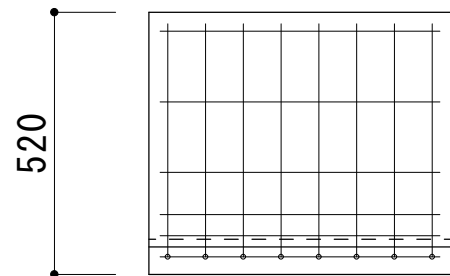


品名	360B U字溝
寸法 (mm)	460 × 600 × 425
重量	100kg

450 U字溝



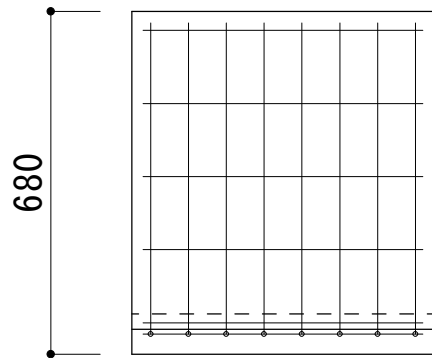
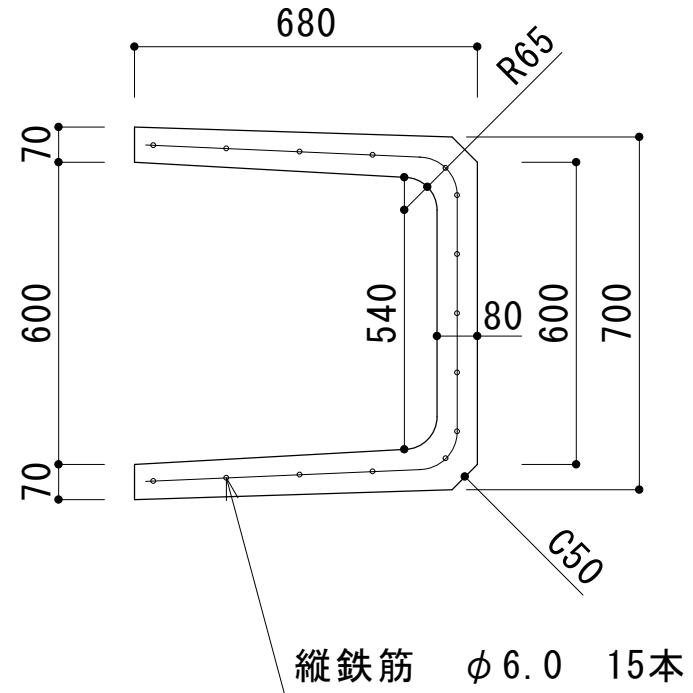
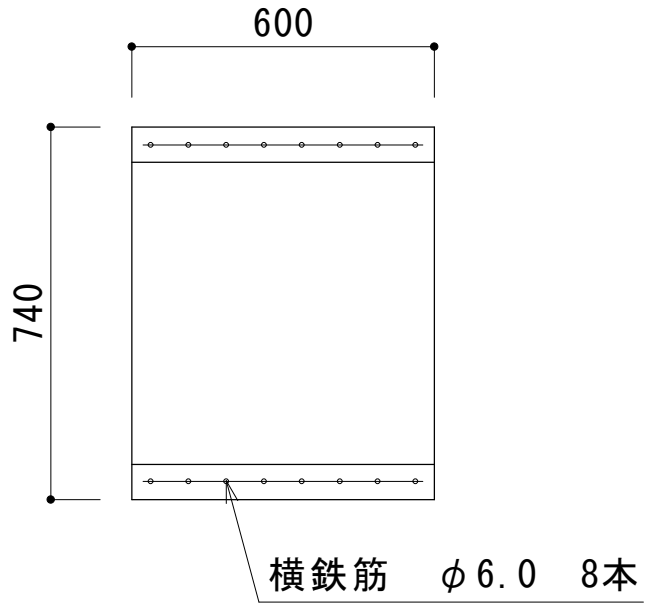
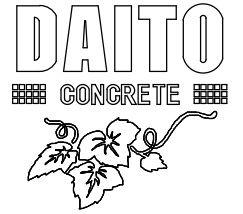
横鉄筋 $\phi 5.0$ 8本



縦鉄筋 $\phi 4.0$ 13本

品名	450 U字溝
寸法 (mm)	560 × 600 × 520
重量	139kg

600 U字溝



品名	600 U字溝
寸法 (mm)	740 × 600 × 680
重量	196kg